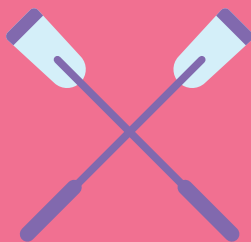
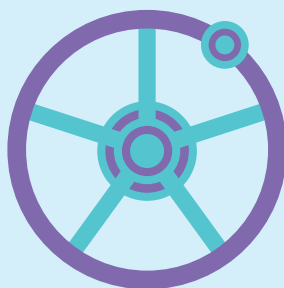
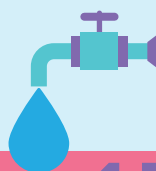
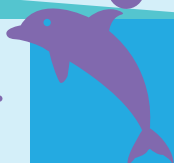


# Welcome to Falmouth Haven



FALMOUTH  
HAVEN

## THE BEST OF BOATING



BRITISH  
MARINE 





# CONTENTS

---

**Welcome to Falmouth Haven 1**

**Marina and Moorings 2**

**Preparing for arrival at Falmouth Haven 4**

**Local area map and our location 6**

**Visitors on arrival from outside the UK 8**

**Falmouth Haven Services 10**

---





---

# WELCOME

---

## BIENVENUE

## WELKOM

## BIENVENIDOS

## VELKOMMEN

## CEAD MÍLE FÁILTE

## DYNNARGH DHIS

Whether Falmouth is your destination, a stop-off as you cruise Cornwall's south coast, or a first or last port of call in the UK, we hope you'll find everything you need here. Falmouth Haven Marina was opened in 1982 and has been steadily improved over the years. Our modern marina has capacity for one hundred boats, gated access and is nestled between the water and the historic town centre.

We are surrounded by places to enjoy as well as useful amenities. Within a few steps are traditional pubs such as the 18th century Chain Locker, perched on the water and the more refined Townhouse bar, set in a striking Georgian building, as well as popular chain restaurants and numerous celebrated independent eateries. You will find an eclectic mix of gift shops, art galleries and clothes boutiques as well as a chandlery and various provisioning stores. For entertainment, the renowned National Maritime Museum Cornwall sits in neighbouring Events Square, or visit Henry VIII's Pendennis Castle, which proudly guards the entrance to the River Fal. If you are unlucky enough to be storm bound, there are few better places to be held captive than here...

---

# MARINA AND MOORINGS

---

## Our Visitors' Marina

We can accommodate craft up to 16m in length, with a maximum draught of 2.5m. Please also note that rafting up is customary at busy times, so please find a berth and introduce yourself to your new neighbours.

For groups and flotillas requiring a berth, please contact us by phone or email. We have excellent visitors' facilities, making Falmouth Haven the ideal base if you are cruising in the area. These include our fuel barge, Wi-Fi, shower, washrooms and laundry, as well as water and electricity of course. See page 10 for a detailed description of our services.

## Visitors' Moorings

As well as the Falmouth Haven Marina we have a number of deep water moorings available for visiting yachts and an anchorage area. The moorings are located adjacent to the main channel – the anchorage is situated opposite Falmouth Docks.

Our 22 visitors' moorings are marked with substantial green/yellow buoys requiring a strop to be passed through the top ring to make fast. We have:

- Nine moorings for yachts up to 40 ft (12.2m) long
- Nine moorings for yachts up to 60 ft (18.2m) long
- Four moorings for yachts up to 80 ft (24.3m) long

If you opt for a mooring you can land your tender in a secure, dedicated area on our marina.

## Long Term Visitors' Moorings for longer stays



Long Term  
Visitors

Long Term Visitors' Moorings have all the benefits of our standard deep water moorings but are better value if you aim to stay for a month or more. In addition, the Moorings come with our Havencard which gives you fuel sales discounts and a host of concessions with a range of local businesses and services within the town.

# Annual marina berths

Our annual marina berths are suitable for vessels up to 12m in length.

For more information and to apply  
[falmouthhaven.co.uk](http://falmouthhaven.co.uk) | 01326 310990



# Advertise with us

We have a number of digital and print advertising options available for all budgets.

[falmouthhaven.co.uk](http://falmouthhaven.co.uk) | 01326 310990



---

# PREPARING FOR ARRIVAL AT FALMOUTH HAVEN

---

Contact us ahead of arrival about our current berth availability and we'll do our best to arrange what's most suitable for you.

## Checking in

If you've contacted us before making landfall at Falmouth Haven you may have already been told where to berth or which mooring to pick up. Alternatively find "Arwenack", our launch (you'll spot her around the harbour between late spring and early autumn – VHF call sign "Arwenack") – or find a space or pick up any of the green visitors' buoys... and then get in touch straight away.

If you arrive between 9am–5pm (winter) and 8am–6pm (summer) please contact us by:

- Telephone 01326 310991/01326 310990
- VHF radio: Channel 12, call sign "Falmouth Haven"
- Make contact with Arwenack
- Make contact with one of our team on the marina

## Arriving out of hours

If you arrive outside of our normal operating hours (9am–5pm in winter or 8am–6pm in summer) and our team are not available, please choose a marina berth or visitor mooring and get in touch with us before 10am the following morning.

# DON'T MISS OUR SPECIAL OFFERS

---

## **Visitor Moorings and Anchorage**

Pay for 5 nights and get 2 extra nights free\*

## **Falmouth Haven Visitor Marina Berths**

Pay for 6 nights and get 1 extra night free\*

## **Short Stay Loyalty Card**

Buy 6 short stays and get the 7th free

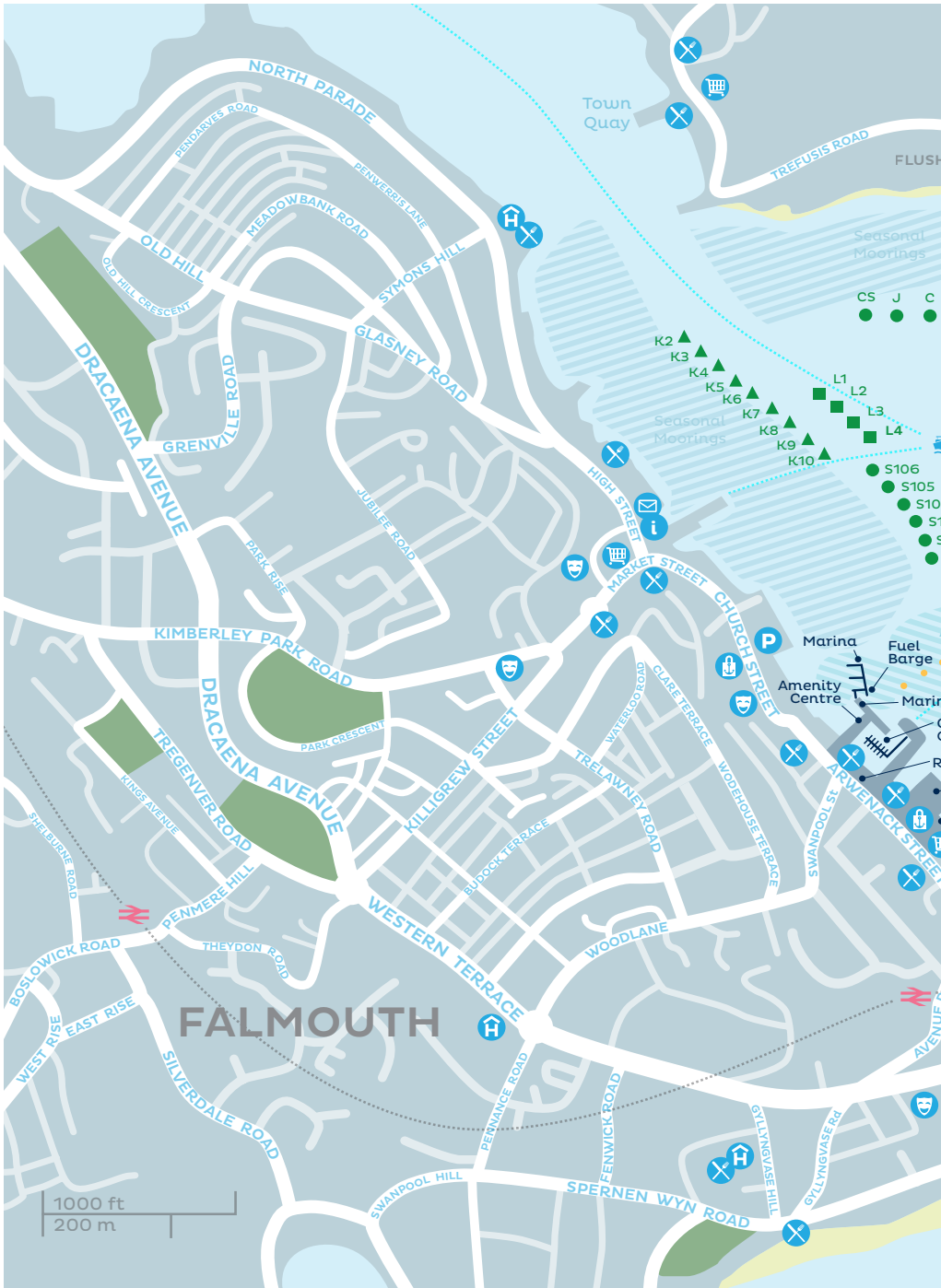
## **Falmouth Havencard**

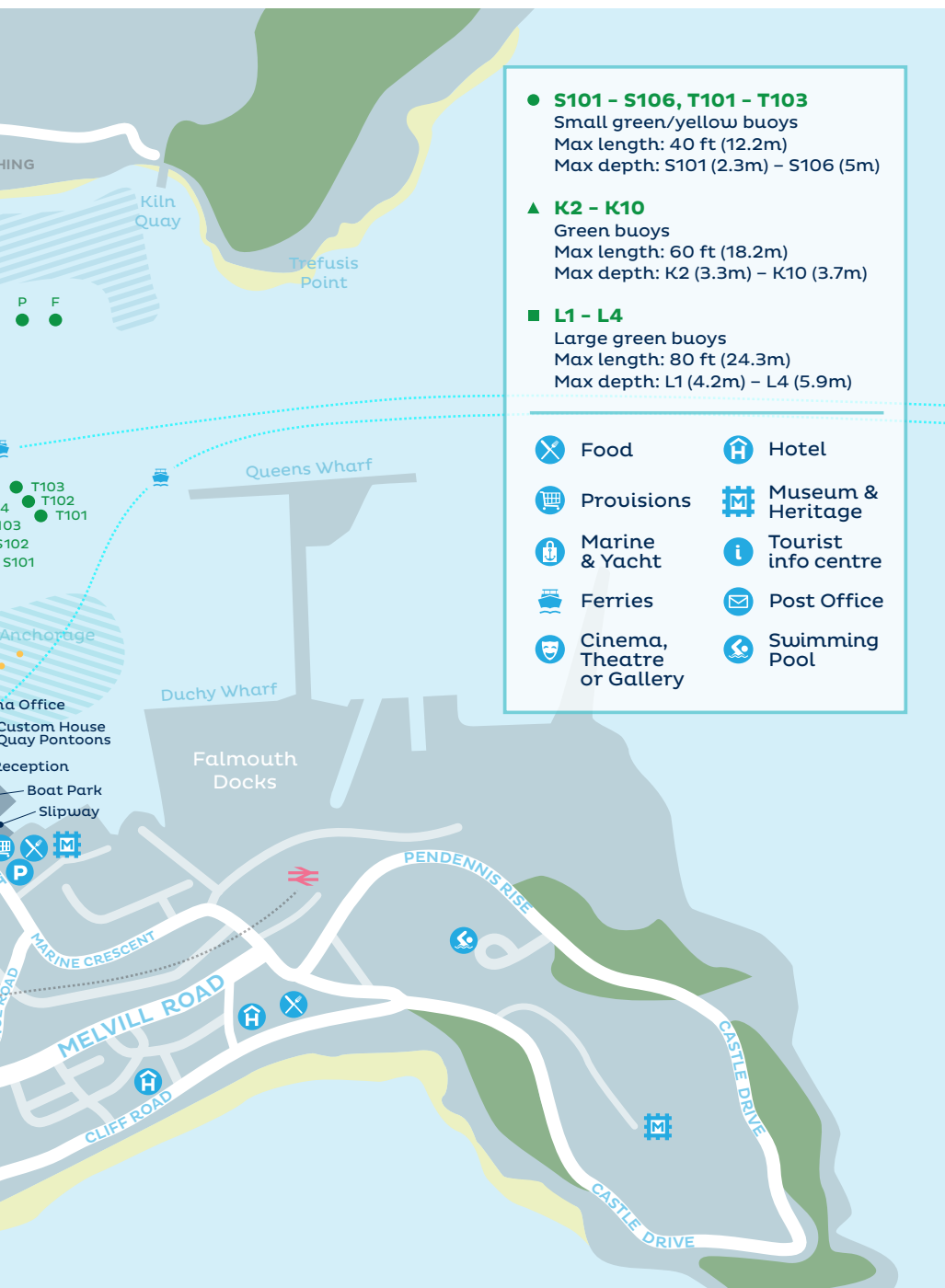
Offers and discounts at many local  
outlets for all Haven visitors

\* Offer only applies when staying for one week or longer.  
Free nights must be taken immediately after paid nights  
and cannot be used during a separate visit in the future.

Visit our website or call for more info  
[www.falmouthhaven.co.uk](http://www.falmouthhaven.co.uk) | 01326 310990









# Don't forget to take your Havencard!

With your Havencard you can access discounts with selected local retailers. Don't forget to take your card with you when you go ashore!

For more participating services  
[falmouthhaven.co.uk](http://falmouthhaven.co.uk) | 01326 310990



# Seasonal Moorings

Deep water swinging moorings in the shelter of Falmouth Harbour, with direct access to superb sailing waters.

- Available on an annual or seasonal basis
- Facilities for craft up to 20m
- Easy access to town centre

[falmouthhaven.co.uk](http://falmouthhaven.co.uk) | 01326 310990







## FALMOUTH HAVEN SERVICES

---

**We have a wide range of services for visiting yachts here at Falmouth Haven, starting with the things you'd expect like fuel and water... Don't hesitate to ask if you have specific needs - whether it's marine matters or recommendations for a good pub! - one of the team will try to point you in the right direction. We all know the town well and will try to help. Tide tables are also provided free for visitors.**



## Electricity

Guests of Falmouth Haven Marina have access to electricity, subject to finding an available electrical hook up. Electricity can be purchased from the kiosk, fuel barge and the main office.

## Fuel

Our purpose built fuel barge is situated on the marina and dispenses high quality petrol and diesel. We accept payment by cash or credit/debit card. It is staffed from 8am–6pm from Easter to September, if you require fuel at other times please contact us in advance. Please also avoid mooring alongside the fuel barge unless you are refuelling.

## Mail handling

We are happy to offer Falmouth Haven guests a mail handling service. Please provide the following as your point of contact:

Your name + Vessel name  
c/o Falmouth Haven  
44 Arwenack Street, Falmouth,  
Cornwall, TR11 3JQ

## Water

Guests using the Falmouth Haven Marina have access to fresh water for refilling tanks. Following marine best practice, we advise that guests bring their own hose pipes to ensure the hygiene of their water supply. Guests berthing on a visitor mooring are also welcome to come alongside and replenish their water tanks.

# Park and launch in the heart of Falmouth

Our accessible slipway and boat park is perfect for small boat launch and recovery.

[falmouthhaven.co.uk](http://falmouthhaven.co.uk) | 01326 310990



## Showers and laundry at North Quay House

Falmouth Haven's guests can enjoy our range of facilities, including top-quality showers and toilets and a laundry area – superior amenities which are often praised by our many seafaring visitors.

## Parking

You will find short stay car parks within a couple of minutes' walk at Custom House Quay and Grove Place. If you require long stay parking, Falmouth Haven's guests are welcome to use our private customer car park at North Quay, subject to availability. Please contact a member of the team to use this facility. Other long stay car parks can be found at The Dell Station and Tinnars Walk.

## The Slipway, Boat Park launch and recover

Falmouth Haven has the most accessible public slipway in the area, with a convenient boat park alongside.

The slipway is large, modern and consistently well maintained for the launch and recovery of boats on trailers. It also has a pontoon alongside for your convenience. It is located at the start of the town's winding main street, with its host of shops, pubs and restaurants... and is moments from a handy supermarket, local chandleries and utility stores.

# Convenient & accessible Boat Park

Why not keep your small boat right in the heart of Falmouth, for easy access to local waters, anytime.

[falmouthhaven.co.uk](http://falmouthhaven.co.uk) | 01326 310990



# LARGE VESSEL MOORINGS

---



Falmouth Harbour Commissioners offer, for short to medium term hire, 5 large vessel moorings conveniently positioned within the shelter of the inner harbour, within easy reach of the commercial port and town. See BA chart 18 & 32.

The moorings are ideal for small to medium-sized commercial craft, large yachts, superyachts, sail training ships and charter vessels. Depending on a vessels characteristics, they can be occupied in both ahead and astern configuration with the option for vessels to lie alongside each other, or as swinging moorings.

Moorings are suitable for vessels up to 60 metres at 5 metre draft within the inner harbour, or above at special request. Please get in touch for more information.



Falmouth Harbour  
Commissioners

MOORINGS & ENQUIRIES

☎ 01326 213537 or  
01326 211395 (24/7)

✉ [info@falmouthharbour.co.uk](mailto:info@falmouthharbour.co.uk)

🌐 [falmouthharbour.co.uk](http://falmouthharbour.co.uk)





## Waste

Please do not throw waste of any sort overboard. Falmouth Haven provides facilities for waste disposal, including a refuse compound and containers for general waste.

We also offer recycling facilities for your paper, card, glass bottles and cans. If you need to dispose of batteries and old engine oil, please contact the Falmouth Haven team.

## Pump out facility

There is now in place a black water reception pump to help customers and the wider harbour community to dispose of black and grey water responsibly without harming the environment.

It is operated on a service basis, so you will need to call 01326 310990 to book a slot appropriate for your vessel.

## Wi-Fi

High-speed wireless internet is available. Once connected, please remember to visit [falmouthhaven.co.uk](http://falmouthhaven.co.uk) for news, tide information and the latest weather updates.

# Stay connected

Subscribe to our monthly newsletter online and follow us on Facebook, Instagram, and Twitter, to keep up to date with the latest news and offers.



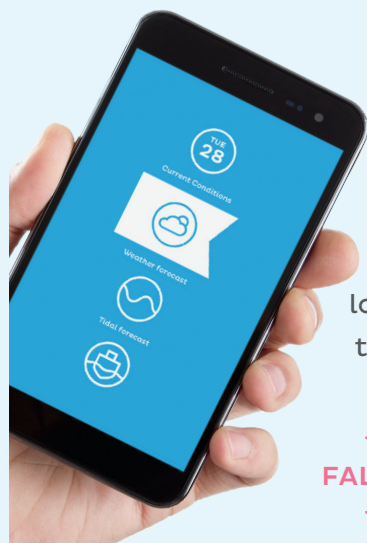
falmouthhaven.co.uk | 01326 310990



## Get the best of boating every day

With our Falmouth Seachecker you get real-time weather reports, sea conditions and tidal forecasts. Plus local shipping movements and notices to mariners... All in one place, for free, on your laptop, tablet or mobile.

[FALMOUTHHAVEN.CO.UK/SEACHECKER](https://falmouthhaven.co.uk/seachecker)





FALMOUTH HAVEN

**THE BEST OF BOATING**

---

Falmouth Haven, 44 Arwenack Street, Falmouth  
Cornwall TR11 3JQ United Kingdom

+44 (0)1326 310990 | [welcome@falmouthhaven.co.uk](mailto:welcome@falmouthhaven.co.uk)

